



Peace Lutheran Church

Beecher Campus Eagle Lake Campus
540 Oak Park Ave. 28054 S. Yates Ave.
Beecher, IL 60401

Pr. Julian LaMie 815-471-2221
(pastorlamie@ourpeacelutheran.org)
Pr. Michael Stein 618-204-0378
(pastorstein@ourpeacelutheran.org)

708-946-2271 office email: secretary@ourpeacelutheran.org
www.ourpeacelutheran.org FAX 708-946-2611

DECEMBER 2023

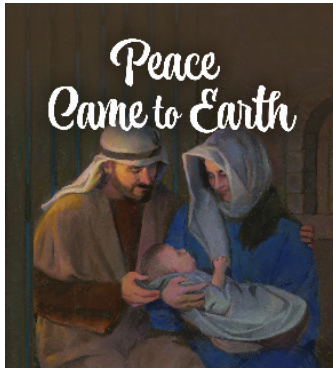


Table of Contents:

Message from Pastor LaMie	Page 2-3
Peace Membership; E-mail; Prayer Requests; Valet Parking	Page 3
Peace Choir; Ladies Bible Study; Prayer Chain; Grief Share; Did You Know; Confirmation Class	Page 4
Elders; Attendance; Ushers Needed	Page 5
New Members Class; LWR Quilts; Decorating; Cookie Walk; Congrats	Page 6
Ladies Aid/LWML; Angel Tree; Service of Remembrance; Dorcas/Sr. Worship Christmas Party	Page 7
Midweek Advent; Christmas Services; Trustee News	Page 8
Our First Christmas Tree; Thank You	Page 9
Retirement Open House; Thank You	Page 10
Altar Flowers for Christmas	Page 11
Children's Christmas Program	Page 12
<i>Insert – Calendars for December</i>	

From the Pastor's Desk

Christmas Traditions and the Heart of Christmas



What are some of the traditions you have around Christmas? Do you bake cookies, send Christmas cards, have a home cooked meal together with family—maybe a ham? Maybe eggnog? How about

go to the Chinese buffet? (Maybe that last one is just my family!) When did your traditions begin? And have they changed over the years? Thinking of my own life, I can think of how some traditions have been maintained or modified, and even some new ones added, especially with major life events like starting our own family. When you get married you might take on some of your spouse's, change some of yours, or come up with new ones together, especially as kids come along. And now I want us to think about some of the traditions we have built up around Christmas with church and the major life event we've had as a church that will impact our traditions this year.

As a church, we've had a major life event. As some have put it, we got hitched—we got married. We've officially gone from three to one. This is our first Christmas as Peace Lutheran Church. What happens when you bring these three different traditions together? The same thing that happens when a family is formed: many previous traditions are brought in and incorporate, some changed, some combined, and maybe some left behind—even some new ones formed.

The major premise of our coming together is that we are stronger together for the sake of the gospel. So, as a church that is now officially one, this season we're going to be doing more things together rather than separate. Details about service times, locations, & children's programs no doubt will be different from years past. Is everything that we do this year going to be how it always will be for Peace Lutheran Church? No, these things will take time to form a common tradition for us. Some things that we try may not work as well, and we can change that for the following year.

This year, will the observance of Advent and Christmas be different from what you're used to? Probably. But will Christ be there for you in word and sacrament? Will you hear the account of his birth from holy Scripture? Will you have the good news which the shepherds proclaimed also proclaimed to you? Will you be able to sing praise to

God, 'gloria in excelsis,' just as the angels did? Dear friends, the answer is a resounding "yes!"

The word 'Christmas' literally is composed of the words 'Christ' and 'mass,' with 'mass' meaning the Divine Service where Christ comes to be with us in word and sacrament. Let us not confuse what Christmas is all about. It's not about our various traditions—it's about Christ coming to this earth for you as your savior, and him coming to you now through word and sacrament. He's here for you this Christmas. Don't let a change in traditions be a reason to miss Him this year. Come to church this Christmas! Hope to see you all there!

Yours in Christ,
Pastor Julian LaMie
Soli Deo Gloria

Peace Lutheran Church Membership Forms – Transfer & New Member

Please complete one form per person in your household and return it to the church office. (*copies in narthex*)

Email Addresses for Peace Lutheran Church

Pastor LaMie – PastorLaMie@ourpeacelutheran.org
Pastor Stein – PastorStein@ourpeacelutheran.org
Church Office (Sandee & Terri) – secretary@ourpeacelutheran.org
Head Elder (Kevin Daugherty) – headelder@ourpeacelutheran.org
Chairman (Kevin Garling) – chairman@ourpeacelutheran.org
Vice Chairman (Stan Heimerl) – vicechairman@ourpeacelutheran.org
Congregational Secretary (Margie Cook) – congregationsecretary@ourpeacelutheran.org
Treasurer (Joan Karczewski) – treasurer@ourpeacelutheran.org
Financial Secretary (Debra Radtke) – financialsecretary@ourpeacelutheran.org
Head Trustee (Bill Karczewski) – trustee@ourpeacelutheran.org
Farmer's Market – FarmersMarket@ourpeacelutheran.org



Prayer Requests Please, if you have requested prayers, keep us informed of any changes in those we are praying for by contacting the church office 708-946-2271 or sending an email to secretary@ourpeacelutheran.org. If we do not hear from you, names will be removed after 3 weeks. Thank you.

Valet Parking is available at the west portico entrance on Sunday mornings @ the Beecher campus.
Volunteer for December is Mike Woods/Ryan Woods.





Peace Lutheran Choir Rehearsals are **7pm** on **Thursdays @ Beecher Campus**. Please join us as we add special music to the Advent and Christmas celebrations.

Ladies Bible Study: *Beginning January 3rd, 2024*

We meet on **Wednesday mornings 9:30am-11am @ the Beecher Campus** in the prior school office (please use the north entrance). If you are interested in joining us or have any questions, please contact Nancy Hamilton at nancylou252@aol.com or text @ 708-204-0327.



Peace Prayer Chain Email List If you would like to be included on our Prayer Chain emails, please send a request to secretary@ourpeacelutheran.org asking us to add you to the list. Members request prayers for family and friends by emailing to this “prayer chain” list. These requests are not put into the bulletin unless specifically asked.

Grief Share (Grief Support Group) ...

Thursdays @ Beecher campus

10am-noon & 6:15pm-8pm

Questions? Contact Pr. Stein 618-204-0378

(Last Grief Share mtg for 2023 is 12/14; 2024 Grief Share will be 10am-noon on Saturdays beginning 1/6.)



DID YOU KNOW...



...that there is a fire escape/exit to the outdoors through the sacristy (Pastor’s dressing room) @ the Beecher Campus? Please keep that fact in mind should a fire or other emergency occur and the usual doors that we

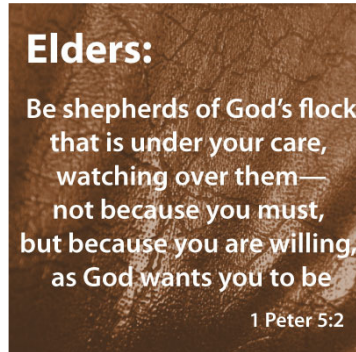
utilize to enter and leave our worship area become blocked. *(Please note that that particular door is an “exit only” door. There is no way to open it from the outside should you leave the building using that door.)*

**Confirmation Class
Sundays 9:15am @ Beecher Campus**



December "Elder in Charge" Schedule

12/03: EL – Garry Hunte
B – Carl Mueller
12/06: 2pm EL – Dave Mills
7pm B – Carl Mueller
12/10: EL – Don Radtke
B – Dave Mills
12/13: 2pm EL – Dave Mills
7pm B – Garry Hunte
12/17: EL – Dave Bunte
B – Kevin Daugherty
12/20: 2pm EL – Fred Belz
7pm B – Dave Bunte
12/24: EL – ?
B – Kevin Daugherty
12/24: 5pm B - ?
11pm B - ?
12/25: 9am EL – Fred Belz
12/31: EL – ?
B – ?
7pm B – ?



Elders Meeting

Elders meetings will be the **2nd Sunday of the month** @ Beecher after the 10:30am service.

REMINDER: Members and visitors please remember to fill out an attendance card! Attendance is reported to LCMS Northern IL District and it also helps us plan for the services (e.g. # of bulletins to print) *Thank you.*



Ushers Needed: Ushers are needed to help make the Divine Services run smoothly.

- passing out at the bulletins
- ushering people up to communion
- making sure that the building is secure during worship

- assisting in whatever way with the offering collection

If you have any questions, please contact Kevin Daugherty 815-970-0211.

New Members Class

Pastor Stein and LaMie will offer a weekly New Member's class for any interested in becoming a member of our church, or for those who have not yet been confirmed in the faith. The class schedule will be determined based on the availability of those in the class. Please contact either of the Pastors if you're interested.



Lutheran World Relief Quilts:

There are a couple of ladies in our congregation, who make LWR Quilts all year long. They would accept material, sheets, pillow cases, drapes, and table cloths to be used in making quilts. This can also be left in the narthex. If you have any questions, please contact Janet Guritz, Arlene Leodler, or Kay 708-946-2472.

Volunteers Needed - Church Decorating

Beecher Campus: 9am Sat., December 2nd
(lunch will be provided by Dorcas)



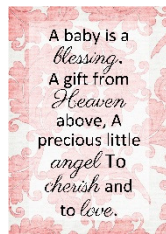
Peace Dorcas Society is asking our members if they will bake cookies for our **Annual Cookie Walk on December 9th, 2023, at the Beecher Campus.**

We are suggesting 5 dozen or 1 batch. Please drop off your cookies in the kitchen at the Beecher Campus between 8:00am – 3:00pm on Friday, December 8th. *If your cookies contain peanuts or peanut butter, please label them.* If you have any questions or need to make special drop off arrangements: please call Debbie 708-252-0095 or

Kay 708-946-2472. If you can help us by donating homemade cookies we thank you!

Congratulations!

Congratulations to Pastor & Juliana LaMie on the birth of a new baby girl, Hannah Elizabeth. She was born on November 26th. Mother and baby are doing well. God's blessings on your new bundle of joy.





Ladies Aid/LWML will meet at the Beecher Campus on **Saturday, December 9th at noon**. We will start our meeting with a Christmas Potluck lunch. After lunch we will wrap over 80 pairs of slipper socks for an area nursing home and write each resident a Christmas card. **All ladies are invited to attend.** Please bring your favorite dish to share along with a pair of scissors, scotch tape and some Christmas cards.

Christmas Angel Tree helps families of our congregation and community who are struggling financially. Each angel on the tree will include only Boy or Girl, their age, plus 3-4 gift suggestions. **Note: Families remain anonymous.** Suggested gift value is approximately \$25. These gifts should be wrapped with the angel attached on the outside & need to be brought to church by **Sunday, December 17th**. Thank you. *Peace Christian Growth Committee*



SERVICE OF REMEMBRANCE
SATURDAY, DEC. 9TH AT 7PM
@ BEECHER CAMPUS



This year we will again hold a special “*Service of Remembrance*”. Its purpose is to help those people who have lost loved ones to get through this festive time of year – but now without those who are missing from their lives. Please remember that this is for both our own members AND anyone within our area. Please spread the word to your friends and family. Perhaps through this effort, we can help many people find more joy at this time of year.



Thursday, December 14th
Dorcas Society and Senior Worship
Christmas Party @ Beecher Campus

Dorcas Ladies and Senior Worshipers – you are invited to attend the Communion **Worship Service at 11am** followed by the **Christmas Potluck at 12 noon** in the Parish Hall. Hostesses: Annie Janota, Ginny Peterson, Kay Bunte, & the Senior Worship Committee. **Visitors & Guests are always welcome to attend.**



Midweek Advent Services

2pm @ Eagle Lake Campus &
7pm @ Beecher Campus
Wednesdays: Dec. 6th, 13th, & 20th

Christmas Eve Services

Children's Program
5pm @ Beecher Campus
Candlelight Service
11pm @ Beecher Campus



Christmas Day Service

9am @ Eagle Lake Campus

Sharing Christmas Gifts with St. Paul Lutheran Church & School, Chicago

Again, this year we have an opportunity to share our many blessings with some children in need from *St. Paul Lutheran Church and School, Chicago*. If you would like to purchase a gift for a child(ren), see Rhonda Stadt. Please spend at least \$25.00 on each child. **The gifts need to be brought to Peace by Sunday, December 17th.** Thank you for your continued support. *Rhonda Stadt*



Greetings from the Trustee Department:

There are numerous projects in the works. A complete list is on the bulletin board at each campus. Below is just a small highlight of the most pressing items:

- a) Signage on the roads leading into Beecher
- b) Boiler system at Beecher Campus needs to be re-routed
- c) Wheelchair access to the gym/fellowship hall at Beecher Campus
- d) ADA toilets and grab bars at Eagle Lake Campus
- e) New deck at EL parsonage

Please contact me if you would like to assist with any project or have any questions. Thank you. *Bill Karczewski, Head Trustee* 708-932-2175 or headtrustee@ourpeacelutheran.org





Did you know the use of a Christmas Tree in the Sanctuary began in America from the LCMS? The custom of Christmas trees in the home is attributed to Martin Luther. The story goes that one Winter evening whilst walking home he was overcome by the beauty of the star light twinkling through the branches of the

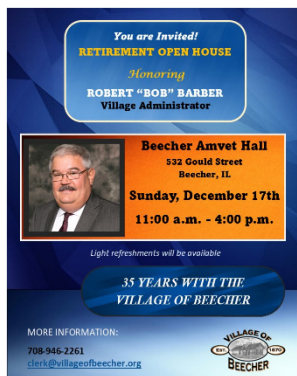
forest. He brought a tree into the house (which I imagine raised the eyebrow of his wife, Katie) and lit small candles on the branches to try and recreate the beauty of God's Light given at the birth of Jesus; the One who overcame the darkness. It was an LCMS pastor, Rev. Heinrich Christian Schwan, of Cleveland, Ohio, in 1851, who is credited with making the custom of Christmas trees in the sanctuary a welcome tradition here in America. The tree caused quite a stir in the community though. A story on *lakewoodobserver.com* tells us, "Within a day or two, Schwan's Christmas tree was the talk of the town, and the talk was not good. A prominent local newspaper called it "a nonsensical, asinine, moronic absurdity, besides being silly." It editorialized against "these Lutherans . . . worshipping a tree . . . groveling before a shrub." Worse, it recommended that the good Christian citizens of Cleveland ostracize, shun and refuse to do business with anyone "who tolerates such heathenish, idolatrous practices in his church." Over the next year Rev. Schwan was able to educate the people of the true origins and meaning of the Christmas tree. They weren't "groveling before a shrub," but rather using the Christmas tree to teach about Jesus. The evergreen tree reminds us of life flourishing in the midst of death like Jesus rose from death. The triangle shape reminds us of the Trinity. But mostly, the decorated tree reminds us of the Light of the world, Jesus, who came to save lost humanity.

So, America has an LCMS pastor who helped spread this wonderful tradition across the land. Rev. Schwan went on to become the third president of the LCMS. There is a half hour clip from a 1950's program that helps explain Rev. Schwan's story. If you're interested it can be watched at: <https://archive.org/details/OurFirstChristmasTree>



Beecher Tree Lighting Thank You!

Thank you to all of the folks who donated, baked, packaged, worked the event and helped in the Reindeer Workshop. Thank you to our creative float team who put together the 2nd place float. An ice sculpture put another float over the top, so we have 11 months to learn how to create an ice sculpted manger scene. It was a great time with lots of laughs and fellowship. We handed out approximately 400 cups of hot cocoa and Peace logo bags of cookies. Thank you for all your support in 2023 and looking forward to what we can do in 2024! *Cherie & Stan Heimerl*



Retirement Open House
Sunday, December 17th
11am-4pm
Beecher Amvet Hall

The Beecher Village Hall is hosting an open house for Village Administrator **Bob Barber**, who will be retiring at the end of this year. They would love to see his family, friends, and colleagues stop by to wish him well in his retirement! Please feel free to share this invite with anyone you think might like to attend. If you have any

questions, feel free to reach out to the Village Hall at 708-946-2261. *Please RSVP so we can get a rough number of people attending.* Thanks, and we hope you can join us. *Janett McCawley, Village Clerk/Office Mgr*

FYI: Tuesdays are the deadline for bulletin information. Mid-month will be the deadline for sending information to the secretaries for the next month's newsletter. Please email your articles/information to secretary@ourpeacelutheran.org.



We thank everyone who helped to make our first Free Community Thanksgiving Meal and the Coat Distribution a success! Many volunteers helped cook a turkey, make a side dish, and donated coats or other items. We also partnered with Alicia's House and the Kickin' it

Back center, Wrapped in Warmth, Zion Grant Park, and our LWML to help make this a great success. Thanks to everyone's work we were able to serve over 80 meals to our neighbors and gave away 75 coats, plus hats, gloves, and scarves. Praises be to our God that we were able to bring the warmth of God's love in a very tangible and meaningful way to these families this Thanksgiving. *Pastor Stein and the whole Evangelism/Christian Growth team*



ALTAR FLOWERS FOR CHRISTMAS

Poinsettias will be available again this Christmas season for \$9.00 each through the Christian Growth Committee. The poinsettias will decorate the Altar through Christmas Day. You may take your plant home following the Christmas Day service. 70 poinsettias will be ordered (50 for the Beecher Campus & 20 for the Eagle Lake Campus).

Reserve your flowers by December 10th.

Thank you for your support!

If you are placing this/these plant(s) in someone's memory or for another occasion, please note below. Please print clearly. This information will be printed in the bulletins on Christmas Eve and Christmas Day.

Plant 1. _____

Plant 2. _____

Plant 3. _____

Plant 4. _____

Plant 5. _____

Number of Plants _____ x \$9.00/plant = Total: \$ _____

Amount enclosed: _____

Your name: _____

**Please Make Checks Payable To:
PEACE LUTHERAN CHURCH**

If you choose to participate, any amount over the cost of the poinsettias will be given to Concordia Theological Seminary.

FROM:



Peace Lutheran Church

Beecher Campus Eagle Lake Campus
540 Oak Park Ave. 28054 S. Yates Ave.
Beecher, IL 60401

Pr. Julian LaMie 815-471-2221
(pastorlamie@ourpeacelutheran.org)
Pr. Michael Stein 618-204-0378
(pastorstein@ourpeacelutheran.org)

708-946-2271 office email: secretary@ourpeacelutheran.org
www.ourpeacelutheran.org FAX 708-946-2611

To:



JAM Families – Children's Christmas Program is 5pm on Christmas Eve at the Beecher Campus. Children should be at church by 4:30pm and meet in the conference room.

Practices: 9:30am-10:30am, Saturdays, December 2, 9, & 16 and the morning of December 24.

Please contact Rhonda Stadt if your child will not be participating. 708-254-7814 or the4stadts@gmail.com

